

# The College News

VOLUME VII. No. 8.

BRYN MAWR, PA., WEDNESDAY, NOVEMBER 17, 1920

Price 10 Cents

## DARK BLUE FALLS BEFORE ONSLAUGHT OF RED FIRST

### 1921 Takes First Game of Finals after Fiercely Contested Battle

With President Thomas applauding from the side lines, '21 hammered the Junior team for a 3-2 victory in the first game of the finals, last Monday. The passing on both teams was wild, and the game, as a whole, was scrappy.

Within the first few minutes of play F. Billstein pushed in the first goal for the Seniors, followed almost immediately by one for '22 by O. Howard. Then for a period, marked by the speedy playing of E. Newell, '21, at half-back, and the strong defense of the Junior fulls and goal, neither team gained until F. Billstein scored her second goal. '22 tied the score almost immediately with another goal by O. Howard, and for the rest of the half neither side scored.

With the score at 2-2 both teams battled to a standstill in the second half, neither side being able to penetrate the opposing defense for a tally. Then, with five minutes to play, came the most spectacular play of the game, when E. Cecil, dribbling down the field, passed to K. Walker, right inside, for a pick-up goal from the edge of the circle. During this half the splendid blocking of E. Newell, at left half, and the team work between K. Walker and E. Cecil, backed by W. Worcester, were features of the Red play, while E. Donohue, R. Neel and G. Rhodes starred for the Dark Blue.

Line-up—1921: E. Cecil, K. Walker,\* C. Bickley, D. McBride, F. Billstein,\*\* W. Worcester, E. Cope, E. Newell, C. Garrison, M. P. Kirkland, M. Foot.

1922: E. Finch, M. Tyler, C. Baird, O. Howard,\*\* A. Orbison, M. Krech, B. Clarke, E. Bliss, E. Donohue, R. Neel, G. Rhodes.

## TO DISCUSS REORGANIZATION OF ALUMNAE ASSOCIATION

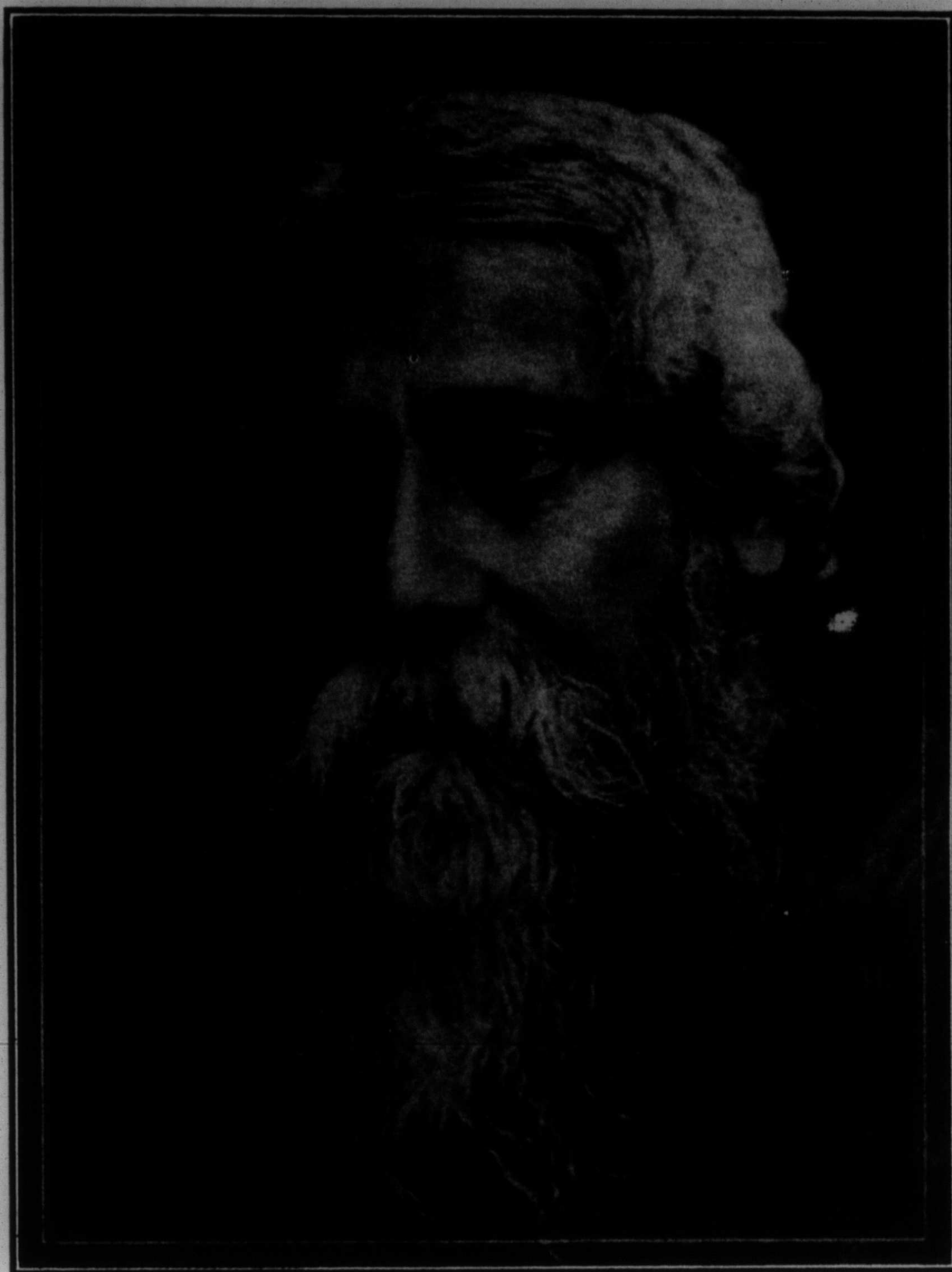
Conference November 22nd to 23rd

Reorganization of the Alumnae Association will be discussed at a conference held in Bryn Mawr, November 22nd and 23rd. A special committee of five has investigated the Alumnae Associations of other colleges, and will report their findings to a joint committee composed of the Board of Directors of the Alumnae Association, the Chairman of the Finance Committee and the Chairman of the Academic Committee. The members of the Special Committee are: Harriet Bradford, '15, Dean of Women at Leland Stanford University, of California (representing the West); Mrs. George Gellhorn (Edna Fischel, '00), representing St. Louis and District 10; Mrs. Learned Hand (Francis Fincke, '97), representing New York and the National Committee; Mrs. Robert Walcott (Mary Richardson, '06), representing New England. The board hopes that Mrs. A. Morris Carey (Margaret Thomas, '89) will be the representative from the Southern Districts.

A meeting of the Executive Board of the Alumnae will be held in Bryn Mawr on November 19th.

## Vassar Presented French Tank

The French Government is presenting a Tank to Vassar College "in recognition of the moral and physical contributions to the cause of the Allies made by Vassar graduates during the War," says "The Vassar Miscellany News." One hundred and fifty Vassar alumnae served in France between 1914 and 1919.



RABINDRANATH TAGORE

## SYSTEM OF LITERAL MARKING ADOPTED BY BRYN MAWR

President Thomas explained the new system of substituting literal for numerical grading in chapel, Monday morning, saying in part:

"The study of our college grades was made by a Faculty Committee of three (Professor Donnelly as chairman; Professor Kingsbury, and Professor Tennent). This study covered nearly a year, and included a careful study of the after careers of all our Bryn Mawr European Fellows. It was proved that certain numbers were not used by the Faculty; that among other curious things, for instance, very few of you get the grade of 72, 73, 76, 77, 78. If your work deserves more than 65 the Faculty very naturally gives you 70, and does not pay much attention to the numbers like 67 or 68. It is almost impossible to discriminate between 75 and 70 (72, 73, or 74), or between 75 and 80. We concluded, therefore, that numerical grading in between the great blocks, such as 60, 65, 70, 75, etc., was worthless. We have now adopted the 'literal system'—Highest Credit, between 95 and 100; H.C. (High Credit), 90 to 94; C. (Credit), 85 to 89; L.C. (Low Credit), 80 to 84; M. (Merit), 75 to 79; L.M. (Low Merit), 70 to 74; P. (Passed), 65 to 69; L.P. (Low Passed), 60 to 64; F. (Failed), below 60—and here we shall give you a numerical grade to help you to make up your deficiencies. In computing the grades, the office is instructed by the Faculty to count a Low Passed as 62½, a Passed as 67½, "M" as 77½, and the other letter grades in like manner. Various test experiments have been made by calculating numerically the grades of the first ten Seniors, and the European Fellows, by the old and new system and the results estimated in numerical grades seem very much the same. We believe that our new system is going to be much more scientific. It is

(Continued on Page 5)

## CLASS PLAYS VICTORIOUS OVER VARSITY DRAMATICS COMPROMISE

The Varsity Dramatics compromise was defeated by a vote of 89-54 at the Undergraduate meeting Tuesday night. In speaking against the compromise, V. Liddell, '22, argued that class plays could be made as good publicity as a Varsity play, too many skits would be a failure, and dramatic talent was not plentiful enough to support credibly three plays, four skits, and a Glee Club performance.

The plan of having college rings instead of class rings was unanimously adopted by the association, in accordance with a motion made by M. Speer, Junior president. Miss Speer advocated a college ring, because it would be cheaper, would save time and trouble every year, and would be a means of distinguishing a Bryn Mawr graduate outside of college.

## Students' Building Drive Begins

An active campaign for the Students' Building will be begun immediately in accordance with a motion made by E. Taylor, '21, and passed unanimously by the association. Work for the Students' Building was abandoned last year on account of the Endowment Fund, but the plans have been drawn up by Mr. de Forrest, the college architect, and a model of the prospective building will be sent to the college. The student fund now stands at \$1100. As soon as this reaches \$25,000, another \$25,000 will be added by the trustees.

The Students' Building Committee is: B. Kellogg, '21; P. Smith, '22, and H. Humphries, '23.

## Oxford Confers Degrees on Women

On October 14th, for the first time in its history, Oxford conferred university degrees on women. Upwards of 59 women students received degrees in the Sheldonian Theatre, and as the degrees were conferred the recipients were loudly cheered.

## TAGORE EXPLAINS PHILOSOPHY OF BENGAL VILLAGE MYSTICS

### Reads Their Poems. Brown Robed Indian Contrast to Audience

Clad in his brown Bengali robe, with a darker brown turban, Rabindranath Tagore made a picturesque contrast to the American audience who heard his lecture in the gymnasium, Friday evening, on "Village Mystics of Bengal." He stood apart, not only by virtue of his appearance, his eastern dress, his calm face with the deep, quiet eyes and long gray hair and beard, but by the mysticism expounded in his lecture, foreign to the average western train of thought. His voice was musical, rising and falling in Oriental cadence.

The idea of infinite love, made manifest in man, underlies the philosophy of the group of ascetic beggar poets, whose teaching Tagore set forth. "To be born a man is the greatest privilege given any creature," they say, "because God's will in giving love finds completeness in man's will returning that love—and love is the personal expression of life in all its perfection." They sing,

"When shall I meet him, the Man of my Heart?"

\* \* \* \* \*

My longing is to meet you, my beloved;  
This longing is not only mine, but yours."

Primitive man, according to Tagore, believed in gods as forces acting on him from outside. Then the idea of God's immanence developed, tending, however, to become impersonal and abstract. "This conception," he said, "finds votaries only among the intellectual, who do not feel the need of love and worship."

The man who first showed that the perfection of God, infinite wisdom and love, dwells in every human personality, was Buddha. "To be good is incidental," he taught. "To be good is only to reveal the infinite that lies in the soul." The value

(Continued on Page 2)

## RELATIVITY TO BE SUBJECT OF DR. AMES ON SATURDAY NIGHT

### New Science Club's First Speaker

"Einstein's Theory of Relativity" will be the subject of the lecture to be given by Dr. Joseph S. Ames, physicist, who will speak under the auspices of the Science Club, at an open lecture in Taylor Hall, on Saturday evening, November 20th. No admission will be charged.

Doctor Ames is head of the department of physics at Johns Hopkins University, and is associate editor of the American Journal of Science and assistant editor of the Astrophysical Journal. In 1917 he was a member of the national Advisory Committee for Aeronautics, and as chairman of the foreign service committee of the National Research Council, visited France and England to study the origin and development of scientific activities in connection with warfare. Doctor Ames is also the author of books on physics, and in collaboration with Doctor Bliss wrote the laboratory text-book in use here at college.

## WILL DEBATE ON RUSSIAN SOVIET

Russian Soviet government is the subject for the next debate on December 1, in which the Debating Club will be assisted by the World Citizenship Committee. The question is worded: "Resolved, That Soviet government offers the Russian people a better chance for development than they enjoyed during the last ten years of the Czar's reign."

The World Citizenship Committee will co-operate with the club for the next three debates to avoid duplication of work.

# The College News

Published weekly during the college year in the interest of Bryn Mawr College

Managing Editor.....KATHLEEN JOHNSTON '21

EDITORS  
ELIZABETH CECIL '21 ELIZABETH KELLOGG '21  
BARBARA CLARKE '22 MARIE WILLCOX '22  
FRANCES BLISS '22 ELIZABETH CHILD '23

ASSOCIATE EDITOR  
F. BILLSTEIN '21

BUSINESS BOARD  
ELIZABETH MILLS '21 CORNELIA BAIRD '22

ASSISTANTS  
MARY DOUGLAS HAY '22 SARA ARCHBALD '23  
RUTH BEARDSLEY '23

Subscriptions may begin at any time  
Subscriptions, \$2.50 Mailing Price, \$3.00

Entered as second class matter September 26, 1914 at the post office at Bryn Mawr, Pa., 1889, under the Act of March 3.

Ruth Beardsley and Sara Archbald have made the business board of the *News* as a result of the competition for 1923. A member from 1924 will be taken on later in the year.

Dorothy McBride has resigned from the business board of the *News* on account of living off campus.

B. Clarke was assisting editor this issue.

### Hockey Player's Garden of Verses (Apologies to R. L.S.)

#### Time to Rise

A birdie with a yellow bill  
Hopped upon my window sill;  
He could not call me sleepyhead,  
The Fifth had pulled me out of bed.

#### A Thought

It is not very nice to think  
The world is full of meat and drink,  
With hockey trainers standing by  
And wanting macaroons and pie.

#### Rain

The rain is raining all around,  
It falls on field and tree;  
We know it is not wet, because  
No yellow flag we see.

#### Whole Duty of Hockey Players

A hockey player must not speak  
When told she is a waddling freak;  
Her tie and stockings must be right,  
Her teeth should all be screwed in tight.

#### Play Bridge

Club upon club has sprung up at college, but still gaps in the system are to be found. The weighty problem of auction bridge, for instance, has not been dealt with, and is it not important that this socially important talent be organized? Consider the valuable practise that could be gained from it by the major mathematics students in keeping their wits sharpened in between times. Think of the profitable hours spent by the Freshmen, coming, as they do, from the outside world, bringing new sources of vigor to Bryn Mawr. They, untrammelled by traditional local interests, burn the midnight oil in keeping their minds centered on those things which will be of importance in future life. We suggest that all this scattered talent be unified into a varsity bridge team, made up from the groups already in training, and be coached by the major mathematics' department. Might their motto be, "We live to learn, and learn to live."

#### Keep Off the Grass

The semi-annual appeal must be made, so we will put it as concisely as possible:  
To the student—Avoid the soft turf, it will lure your thoughts into frivolous byways.  
To the "toddler"—Beware the tangled blades, they will catch your French heels.  
To the athlete—Never take short cuts, you need the exercise of trotting over the longest route.  
To the aesthete—Spare the greensward, so its spring beauty will be unmarred.  
To the college—Keep off the grass, it needs a rest.

#### Rewrite News in Spanish

Translating the *News* into Spanish is one of the exercises of the post-major Spanish class. They also translate modern prose pieces and plays, like Barrie's *Rosalind*.

## NEW SCHEDULE FOR CLASS REUNIONS PROPOSED BY ALUMNAE

Reprinted from the *Alumnae Quarterly*, November, 1920

At the alumnae meeting held on June 2, 1920, it was voted that a committee be appointed to consider the form of schedule now used at Vassar for class reunions. Clara Seymour St. John, '00, chairman of this committee, has looked into the system with care and has drawn up for our consideration the following schedule.

The system has as its purpose the elimination of congestion of class reunions necessary when the classes are as numerous as they have been for some time at Vassar and as they are becoming at Bryn Mawr. The Vassar Alumnae Association has used this "Dix Schedule" for four years and has found it very successful. Occasionally a class has wished to come out of its regular order, and in that case, at Vassar, it has been required to stay off the campus and hold its celebrations without the aid of the college. After the system is once established reunions come every five years for each class, each time with three of the classes which were in college at the same time with it. In four reunions each class will have twice seen all the classes which were in college with it.

This schedule is read downward for the class reuning in each calendar year, and across for the calendar years in which each class reunies.

The Board of Directors submits this schedule for your consideration. The matter will be formally brought up at the annual meeting of the Alumnae Association. Mrs. Francis will welcome any expressions of opinions from alumnae or undergraduates.

Classes	1921	1922	1923	1924	1925	1926	1927	1928	1929	1930	1931	1932	1933	1934	1935	1936	1937	1938
89											89	90					89	90
90												91						91
91												92						92
92												93						93
93												94						94
94												95						95
95												96						96
96												97						97
97												98						98
98												99						99
99												00						00
00												01						01
01												02						02
02												03						03
03												04						04
04												05						05
05												06						06
06												07						07
07												08						08
08												09						09
09												10						10
10												11						11
11												12						12
12												13						13
13												14						14
14												15						15
15												16						16
16												17						17
17												18						18
18												19						19
19												20						20
20												21						21
21												22						22
22												23						23
23												24						24
24												25						25
25												26						26
												27						27

\* By adjustment.

(The editors do not hold themselves responsible for opinions expressed in this column.)

#### What Harm?

To the Editor of *The College News*:

Guests visiting the library may be unfavorably impressed by "feet aloft on desks," yet, after all, we do not arrange ourselves in the library to be gazed at, but to do serious study, the fruits of which may reach the outside world beyond Philadelphia. I well remember being taught in one of the required courses in college that true concentration cannot be sustained effectually unless the feet are higher than the heart. If you believe that we lift our feet to air our silk stockings or to display their patterns, may I suggest that most of us will be willing to take steamer rugs to throw over them?

Involved.

#### Methodist Students Welcomed

To the Editor of *The College News*:

Whether or not you are a daughter of John Wesley, I would like through the columns of the *News* to extend to you a cordial welcome to "the little ivied church on the corner," St. Luke's Methodist Episcopal Church, Penn and Montgomery Avenues. Methodists of the college are especially invited to be present on the first Sunday morning of every second month at Holy Communion. The first of these will be on November 7th. Further plans for co-operation will be made through the new denominational committee of which Miss Elizabeth Vincent, '23, is the Methodist representative. I feel that it is vital for every student to keep in personal touch with the church, and I will therefore be glad of any assistance. The parsonage is next to the church on Penn Avenue; telephone Bryn Mawr 273 W. The hours of worship are: Sunday School, 9.45; morning worship, 10.45; young peoples' meeting, 7.00; evening worship, 7.45.

CHARLES DANIEL BRODHEAD,  
Pastor of St. Luke's Methodist  
Episcopal Church.

#### GLADYS LEUBA IS HEAD OF MODEL SCHOOL ORGANIZATION

The Model School has formed a student organization, headed by Gladys Leuba, which has charge of athletics, order of the rooms, arrangement of tables, and the opening exercises. Every Tuesday meetings are held, at which the managers report and various questions are decided. The first issue of the school paper will be published next week.

The officers are: Head of school, Gladys Leuba; secretary, Polly Butcher; editor of paper, Elizabeth Wilbur; business manager, Tacy Hurst; chairman of athletics, Patsy Kelley; chairman of order committee, Miriam Folwell; chairman of table committee, Caroline Gucker; chairman of opening exercises, Frederika de Laguna.

#### "Scraps and Scribbles" Published

The first issue of "Scraps and Scribbles," the Model School newspaper, was brought out on November 4th. The editor-in-chief is Elizabeth Wilbur, Class VI.

"Scraps and Scribbles" is a two-page mimeograph sheet, which was founded last year by Frederika de Laguna, who was its first editor. The first issue this Fall contains two poems, alumnae and athletic notes, two contributions from the primary, and a long reminiscence by B. Sparkman, called "Do You Remember?"

"Prehistoric Man," a poem by Frederika de Laguna, is quoted below:

"The Prehistoric Monkey-Man  
Lived many years ago.  
In every single living thing  
He had a dreaded foe.

"He made axes, hatchets, cooking pots  
And hammers out of stone,  
And many curious, useful things  
Of antler or of bone.

"We do not know just how he lived,  
His history is a mess,  
But from the things he left behind,  
His daily life we guess."

## ALUMNAE NOTES

Lorinda Perry, Ph.D., '13, is Assistant Professor of History at Hunter College, New York.

Beulah Fegley, '18, is Secretary to the Distribution Manager of the Packard Motor Car Company, of Philadelphia.

Harriet Bradford, '15, Dean of Women at Leland Stanford University, is to be the guest of President Thomas, at the Deanery, during the conference of the committee for reorganizing the Alumnae Association, November 22nd-23rd.

Leila Houghteling, '11, will be in Bryn Mawr in time to attend the meeting of the Executive Board of the Alumnae Association on November 19th, and will stay over for the special conference on the 22nd and 23rd.

Mary Scott, '19, has accepted a position as Assistant Worker at the Reed Street Neighborhood House, Philadelphia.

Mary Tyler, '19; Frances Clarke, '19; Rebecca Reinhardt, '19, and Leita Harlan, '20, were at college during the week end.

#### RACE PROBLEMS DISCUSSED AT OPEN SILVER BAY MEETING

"We've got to do something to create satisfaction in the colored races which we govern or we will find a dangerous sympathy developing between the Japanese in California and the darkies in the South," said Helen Hill, 21, leading the discussion of the Race Question held in the Christian Association Library last Wednesday evening. Education, to encourage race pride rather than aping of white standards was, the speakers agreed, an important step toward a solution. The discussion, which was based on a course given by Dr. E. C. Silcox, at Silver Bay, this summer, will be continued this Wednesday when Doctor Silcox will speak on the "International Factors of the Race Question," and will answer questions.

K. Walker, 21, speaking on "The Superman Ethics," stated that since 1500 the white race, because of advantages in environment and population has been leaders. According to Miss Walker, the Japanese victory over Russia, in 1904, was considered by some writers as a turning point in the domination of the whites.

#### BENGAL POET AT BRYN MAWR

(Continued from Page 1)

of Buddha's preaching was shown by the fact that it was not followed by stagnation of life, but by the development of institutions, arts and sciences.

The beggar mystics who carry on the philosophy, belong, said Tagore, to the 95 per cent. of British subjects in India, with less than elementary education. They know their small value in the world, but believe they have found wisdom and happiness in coming close to the heart of the great lover. They compare themselves in song to the vessels half filled, which support the maidens when they swim in the river, while men of distinction are the full vessels, which stay useless on the shore. They feel themselves "flutes, through which God's breath of love has been breathed in music."

Tagore told at dinner with the English Club and at a reception after the lecture, about his boys' school in Shantineketan, the first one in India with a self-government system. The boys have their own court and mete out punishments to offenders, the worst being complete ostracism, when the boy even eats apart from his companions.

J. B. Pond, head of the Lyceum Bureau, in New York, accompanied Tagore to Bryn Mawr.

Recent statistics show that more men in Harvard are specializing in English literature than in any other subject, while economics stand second in popularity, and chemistry third.

Compulsory chapel has again been adopted as a result of more than a two-thirds majority vote of the student body at Smith.

# SPORTING NEWS

## RED TRIUMPHS OVER GREEN IN FINALS OF PRELIMINARIES

### Seniors Show Strong Defense

With the final score of 3-2, the Seniors defeated the Sophomores, winning their way into the finals in the second game of the preliminaries last Thursday. The game was hotly contested throughout, though both teams showed poor team work.

The struggle started with a goal for '21 almost immediately, by D. McBride, but after a considerable scrimmage the Sophomores countered goal by C. McLaughlin, after a run down a clear field. With the score tied, both teams seemed in a deadlock. Time and time again M. Adams brought the ball down the field, only to meet with '21's strong defense, and to have it lost by wild shooting of her team. Finally the Seniors' greater aggressiveness availed them, so that C. Bickley was able to push in a second goal, and not long afterwards the Seniors scored again by the combined efforts of the team.

The second half began with greater determination on the part of the Sophomores, so that meeting the unflagging defense of '21, every shot was fought for. Again M. Adams proved herself the chief supporter of the Sophomore forward line, at length scoring with a clean shot from the outfield. Throughout the rest of the game '23's defense proved impenetrable, H. Rice many times stopping E. Cecil's fast dribbles down the field. On the whole, the playing of the Seniors was even, but unextraordinary, while that of the Sophomores, at first unorganized, improved immensely in the second half.

Line-up—1921: E. Cecil, K. Walker, C. Bickley,\* D. McBride,\* F. Billstein, W. Worcester, E. Cope, E. Newell, E. Taylor, M. Kirkland, M. Foote, team.\*

1923: A. Smith, E. Vincent, C. McLaughlin,\* J. Richards, M. Adams,\* E. Page, V. Corse, F. Martin, H. Rice, A. Howell, K. Raht.

## RED FOURTH WINS WAY TO FINALS CONQUERS '23 IN PRELIMINARIES

In the last game of the preliminaries on Fourth, last Thursday, '21 defeated '23 with a score of 5-0. The Green team was outplayed from the start, and never seriously threatened the Red goal.

During the first half the play was almost entirely in the Green territory, and it was only through the strong defense of K. Strauss at center-half, and H. Dunbar, full-back, that more goals were not scored. S. McDaniel proved quick on the forward line, which was messy and showed a lack of organization. J. Brown, full-back, starred for the Seniors, proving to be the strength of the left side of the field, while K. Johnston was good at right inside, scoring two out of the five goals.

Line-up—1921: E. Bliss, K. Johnston,\*\* I. Lauer,\* E. Collins, G. Lubin,\* H. Bennett, P. Ostroff,\* B. Warburg, J. Brown, D. Klenke, E. Boswell.

1923: M. Carey, E. Scott, E. Ericson, S. McDaniel, F. Childs, K. Strauss, E. Fitzgerald, D. Stuart, H. Dunbar, M. Bunch.

### SWIMMING CLASSES

The new requirements for swimming classes which have been passed by the Athletic Board, are:

#### First Class. Medal

#### SPEED SWIM:

2 lengths, 45 yards, 40 seconds.

#### ENDURANCE SWIM:

150 yards, 2 minutes, 45 seconds.

#### FORM SWIM:

5 strokes, 9 points on each: breast, back, side, trudgeon and crawl.

#### DIVES:

6 dives, 50 points in all: standing front, running, back dive, running jack-knife and any two fancy dives on Official List.

#### PLUNGE:

40 feet.

#### UNDER WATER:

50 feet. Two of these three required.

#### SIX RINGS:

2 tries.

The other class requirements will be in the next issue of the News.

## JUNIOR VICTORY COMES AFTER HARD EXTRA PERIOD OF PLAY

### Eliminates Freshmen First Team

Held to a 3-3 tie at the end of the second half, '22 battered through the Freshmen defense for the decisive goal in an extra five-minute period, and eliminated '24 in the second game of the first team series last Friday.

After several minutes of play in center-field H. Nicoll, '22, found a hole in the light blue defense and tore through for the first goal. Depending on the speedy co-operation of M. Faries and F. Begg, '24 took the offensive and kept the play in Sophomore territory, B. Howe tying the score with a clear shot. Owing to the superb blocking of E. Donohue, Junior captain, the Freshmen were unable to score again until the end of the period, when F. Begg evaded the full-back and shot a goal. Receiving a pass from the center bully, B. Howe made a long run through a broken field, and shoved in the third Freshman tally within a half minute after their second. The half ended with the score 3-1 in favor of '24.

In the second half the steady and persistent interference of F. Bliss and M. Krech, Junior halves, checked the onslaught of the fast Freshmen wings, and kept the play in the center of the field. E. Finch, '22, right wing, tied the score with two goals, and made the deciding tally in the extra five-minute period. Except for A. Nicol, '22, forwards were slow getting started. '24's attack was speedy, but their passing and shooting ineffectual at the circle.

Line-up—1922: E. Finch,\*\* M. Tyler,\* C. Baird, A. Nichol,\* A. Orbison, M. Krech, B. Clarke, F. Bliss, E. Donahue, R. Neel, G. Rhoads.

1924: K. Elston, M. Russell, B. Howe,\*\* F. Begg,\* M. Faries, E. Angell, E. Tuttle, M. Palache, B. Pearson, M. Bailey, V. Neilson.

## FRESHMEN CONQUER '22 ON 4TH

### Win 3-0 in Easy Battle

Defeating the Juniors 3-0, '24 crashed through to victory on Fourth, last Friday, in the second game of the preliminaries. The first game was a tie.

The Freshman forward line was speedy and outplayed the Dark Blue line which was slow and lacked team work, taking the ball down time and again only to lose it to the Freshman full-backs. E. Brown, at half-back, played a good game for the Juniors, blocking well and covering the center of the field, while H. Stevens was good on the forward line.

Line-up—1922: H. Woodruff, A. Gable, H. Stevens, E. Brush, H. Fountain, S. Kirkbride, E. Hall, E. Brown, M. Speer, V. Grace, O. Pell.

1924: M. Smith, M. Anderson, L. Dillingham, E. Tadjer, J. Gregg, A. Shiras, B. Taylor, B. Pearce, G. Bensberg, E. Hawkins, B. Ling.

### Freshmen Win Deciding Game

In the final game of the Third team preliminaries last Monday, '24 triumphed over the Juniors with a 3-0 score. The Freshman forward line, with M. Moliter as star, was fast, and their defense was strong, while '22 was weak in passing and shooting, and lacked co-ordination.

Line-up—1922: Gable, Hand, Burgess, Rupert, Hall, Hay, Gardner, Yeatman, Rhett, Pell. Substitute—Stevens for Hall.

1924: McRae, Palmer, Ford, Hale, Moliter, Wise, Mosle, Shiras, Murray, McNeely, Neville. Substitute—Bingeman for Shiras.

## MARY PALACHE WINS TOP PLACE ON 1924'S TENNIS LADDER

Defeating O. Fountain 6-2, 6-3, in the finals of the Freshman Tennis Tournament, played last Thursday, M. Palache is '24's tennis champion.

Freshman first squad, as it now stands, is: M. Palache, B. Borden, O. Fountain, J. Palmer, B. McRae, F. Wallace, H. Beaudrias, M. Angell, E. Ives, E. Pierson.

## DARK BLUE BEATS WAY TO FINALS OVER FRESHMAN SECOND

### Outclasses '24 From Start

Hammering the Freshman defense with a steady persistency, '22 walked away with the last game of the preliminaries on Second, last Thursday, with a 6-0 score. The Dark Blue outclassed the Light Blue at every point, and was able to score almost at will.

The Junior team jumped into the lead with a goal by A. Dom early in the first half, and for the rest of the period no further score was made. J. Palache starred for '22 at full-back, covering the right side of the field, while M. Voorhees was speedy on the forward line, taking the ball down and shooting well for goal.

During the second half '22 scored almost at will, making five out of the total six goals in this period. The Freshman forward line was speedy but lacked team work, and shot wildly in the circle.

Line-up—1922: M. Crosby, M. Voorhees,\*\* O. Howard,\* P. Norcross, A. Dom,\*\* L. Grim, P. Smith, M. Kennard, J. Palache, C. Cameron, V. Liddell. Substitute—Jennings for Grim.

1924: O. Wiches, E. Hales, B. Borden, B. Price, J. Lawrence, B. Ives, V. Miller, K. Gallway, L. Davies, S. Lewitz, P. Coyne. Substitutes—J. Palmer for B. Price, Bingeman for Davies.

## 1924 TROUNCES JUNIORS ON THIRD

### Dark Blue Wins First Match

In a fast game characterized by good passing and clever team work, the Junior Third triumphed over the Light Blue 3-2, last Wednesday. K. Stiles took her line down well, scoring the three Junior goals, while E. McNeely, '24, proved the only obstacle to the onslaught. In the hard fighting around the goal H. Jennings was the mainstay of the Dark Blue defense, and B. McRae dribbled fast for the Freshmen, but frequently lost the ball in the circle.

### Light Blue Reverses First Defeat

Fighting fiercely against one defeat, '24 turned the tables on '22 with a 3-2 score on Saturday morning, in the second game of the preliminaries, in which both teams showed scrappy playing and lack of organization.

Line-up—1922: Burns, Burgess, Stiles, Hand, Dom, Gardner, Hay, Hall, Jennings, Yeatman, Rhett. Substitutes—Rupert for Hall (first game), Gable for Gardner, Speer for Yeatman (second game).

1924: McRae, Palmer, Ford, Hale, Moliter, Pearce, Mosle, Shiras, Bingeman, McNeely, Neville. Substitutes—Dillingham for Moliter, Smith for Pearce, Murray for Mosle, Ling for Neville (second game).

## SOPHOMORES HOLD SENIORS TO BARE VICTORY ON SIXTH

### (Special to the College News.)

With the Red Moth team scoring 1 to 0 against the Griffin's green players, the first sixth team match game in the history of Bryn Mawr was staged last Wednesday before a wildly enthusiastic grandstand.

The goal on which hung the fate of the Senior sixth was scored by K. Cowen, center forward, during the first half of the game. As the ball crashed between the goal posts, cheers of wild enthusiasm broke from '21's section, where L. Reinhardt, college song leader; E. Cope, president of the Athletic Association, and E. Donnelly, with the team mascot, were among the ardent rooters for the red-skirted sixth.

Sophomore fans, no less enthusiastic, spurred their team on with cheer and song, but an impermeable defense, Goddard and Gates starring, proved the green's trump card, and the score was held 1-0 for the Seniors.

Line-up—1921: F. Kniffin, T. Williams, H. Farrell, K. Cowen, E. Sheppard, D. Wycoff, E. Harris, D. Lubin, L. Cadot, M. Weisman, L. Wilson.

1923: B. Kilroy, R. Geyer, E. Newbold, H. Millar, D. Fitz, F. Knox, K. Shumway, C. Goddard, S. Archbald, I. Gates, A. Gest.

## RED FORWARD LINE PROVES TOO STRONG FOR 1923 ON SECOND

### Elizabeth Kales Stars

Unable to resist the rapid onslaught of '21, the Sophomore second fell before the red team in the final game of the preliminaries on Friday, ending with a score of 13-1.

At the outset '23 scored its only goal, shot by M. Schwartz, right wing, after J. Spurney, right half, backing the formidable red forward line had registered the first score. From this point on the play centered before the Sophomore goal. Scrappy fighting on the part of the green defense, M. Bradley and E. Child blocking the goal, characterized the game. Although A. Taylor, at left, fully proved a sturdy opponent, the '1923 forward line evaded her only to miss a goal through careless aiming. At the end of the first half the score was 5-1. E. Kales, right inside, starred during the second half, repeatedly carrying the ball spectacularly to a goal. E. Jay, right wing, with rapid passing, strengthened the right side of the field and made it the most powerful. '23, on the whole, was disorganized, half-back and full-backs overlapping, and failed to make a concerted attack.

Line-up—1921: E. Jay, E. Kales,\*\*\*\*\* L. Beckwith,\*\* M. Smith\*\*\* (for C. Mottu, captain), H. James,\* J. Spurney,\* J. Peyton, M. Morton (for E. Mills), C. Garrison, A. Taylor, M. Morrison.

1923: M. Schwarz,\* L. Mills, L. Richards (captain), I. Beaudrias, H. Pratt, F. Matteson, J. Ward, F. Knox, E. Kellogg, E. Child, M. Bradley.

## RED THIRD WINS WAY TO FINALS

### Defeats '23 in Two Games

Playing a hard, fighting game, the Senior third won the first game of the preliminaries last Wednesday, defeating '23 by a score of 4-3. The Senior full-backs played a strong game, repeatedly pushing the forwards into the goal, where they failed to take advantage of their many opportunities to score. J. Lattimer, '21, dribbled speedily, taking the ball down again and again, while M. Holt, at full-back, was the strength of the Sophomore team, often stopping the rush of the Red forwards.

### Seniors Win Second Match 3-0

In the last game of the preliminaries, Saturday morning, the Senior third defeated the Sophomores with a 3-0 score in a quick passing game. In the first half '21's strong forward line was in evidence, winning two goals in quick succession, through E. Collin's clever work at wing. The Sophomore defense then rallied, and with K. Strauss proving the mainstay, held the Seniors to one more goal.

Line-up—1921: J. Lattimer, M. Smith, M. Archbald, V. Evans, E. Collins, K. Woodward, M. Morton, C. Barton, E. Godwin, M. S. Goggin, H. Stone. Substitute—H. Hill for J. Lattimer (second game).

1923: F. Young, H. Price, M. Dunn, R. Beardsley, D. Meserve, F. Harrison, K. Strauss, A. Fraser, H. Wilson, H. Dunbar, A. Hay. Substitutes—M. Carey for F. Young, H. Dunbar for M. Holt (second game).

## SIGN NOW FOR WINTER EXERCISE

Winter physical training periods must be signed for in the Gymnasium this week. The Winter schedule begins the Monday after Thanksgiving. Two periods of class work are required a week.

### SPORTING NOTES

The All-Philadelphia Hockey team has been defeated 8-2 in the two matches it has played with the Surrey team, and with the Western Counties team.

In a story describing the game, a New York paper uses the headline, "Yankees Defeat English Women on Ice."

Sophomore Apparatus Captain, for '23, is Jane Richards, and Water Polo Captain is A. Smith.

# WHERE TO SHOP

**J. E. CALDWELL & CO.**  
Chestnut and Juniper Streets  
Philadelphia

**GOLDSMITHS SILVERSMITHS  
JEWELERS**

College Insignia  
Class Rings  
Sorority Emblems

STATIONERY WITH SPECIAL  
MONOGRAMS, CRESTS and SEALS

**KIEFERLE Co., INC.**

Gowns, Suits,  
Topcoats,  
Wraps and Waists

to order  
ready to wear

10 per cent discount to students

133 S. 18th Street, Philadelphia

**MRS. GERTUDE NIXON  
HEMSTITCHING**

28 OLD LANCASTER AVENUE  
Telephone: Bryn Mawr 533

**STRAWBRIDGE  
and CLOTHIER**

SPECIALISTS IN

FASHIONABLE APPAREL  
FOR YOUNG WOMEN

MARKET, EIGHTH & FILBERT STS.  
PHILADELPHIA

## HATS

**PANCOAST**

1730 CHESTNUT STREET  
PHILADELPHIA

*The Plum Store*

The Store of Personal Service  
1310 CHESTNUT STREET

*All That is New in*

GOWNS	COATS	FURS
COSTUMES	WRAPS	BLOUSES
TAILLEURS	MANTEAUX	MILLINERY

**Silk Duvetyne Hand Bags**

A Material that can be carried all year round



Style 2. \$16.50

Style 1. \$9.98

Style 3. \$5.50

Colors: Brown, Castor, Blue, Black

Our Assortment of Leather and Bead Bags excel all others  
and are Moderately Priced

Price Includes War Tax. When Ordering Give Color and Number.

**WILLIAM CURRY,** 1112 Chestnut Street  
PHILADELPHIA

**THE FASHIONS, THE ETHICS AND THE  
ETIQUETTE OF DRESS ARE ARTS  
FEMININE TO WHICH THIS SHOP IS  
DEDICATED**

The correlation of Fashion, Ethics and  
Etiquette in the matter of dress involves  
the "Fitness of Things" to which the  
well-groomed Woman and Miss subscribe,  
so that a complete harmony and appro-  
priateness of the costume be achieved.

Inconsistencies of dress and breaches  
of good taste are as inimical to correct  
fashion as attire that does not reflect the  
spirit of the mode or that distorts it.

**BONWIT TELLER & CO.**

The Specialty Shop of Originators  
CHESTNUT AT 13th STREET

## For Thirty Years

We have made a specialty of furnishing

**HIGH-GRADE  
COLLEGE  
PRINTING**



to the various educational institutions  
of the country in the form of Class  
Records, Catalogs, Programs, Circu-  
lars, Etc.

Our facilities for printing and binding  
are unsurpassed, and we solicit your  
patronage.

**THE JOHN C. WINSTON COMPANY**  
1006-1016 ARCH STREET PHILADELPHIA

**Born**

Marjorie Williams (Mrs. John McCullough), '18, has a daughter, born October 20th.

Anne Hardon Pearce, '15 (Mrs. B. C. Pearce), has a daughter, Anne Frances Pearce, born July 5th, at Wilton, Conn.

**Married**

Catharine ReQua Bryant, '16, was married, last Saturday, to Mr. Cochran Supplee, of Chicago, son of Col. J. Franklin Supplee, of New York and Baltimore.

**Engaged**

Professor and Mrs. Charles M. Andrews, of New Haven, formerly of Bryn Mawr, announce the engagement of their daughter, Ethel, ex-'19, to Mr. Henry Killam Murphy, of the firm of Murphy and Dana, Architects, New York. After the wedding, on December 3rd, the bride and groom plan to spend eight months in the Orient, where Mr. Murphy's firm have built and are building a number of colleges and universities in China and Korea.

Frances Sladen Bradley, '16, has announced her engagement to First Lieutenant William Elbridge Chickering, United States Army, University of Pennsylvania, '14.

Eleanor Brush, '22, has announced her engagement to Mr. John Cochran, of Chicago.

**NEWS IN BRIEF**

According to a decision of President Thomas, no one may come to Sophomore Play in a middy blouse or athletic clothes.

The Bryn Mawr Choir will lead the singing at the Tableaux to be given in the Bryn Mawr Fire House the Tuesday night before Thanksgiving.

E. Bright, ex-'23, is left wing on the Varsity Hockey Team at Radcliffe.

M. Voorhees has been elected Junior member of the Junk Committee, following the election of M. Kennard, former chairman of the Junk Committee, to the C. A. Board.

The Junior Member of the Bates Committee in place of E. Hobdy, who was already on the C. A. Board, is B. Clarke.

Four new books a week from the Maids' Library, in Merion, will be placed in each hall for the use of the maids.

H. Rice, '23, played her violin at the Maids' Sunday School last Sunday.

Betty Kellogg, '21, has been elected chairman of the Students' Building Committee in place of J. Peyton, '21, who resigned on account of too much work.

Athletic demonstrators this year are Elizabeth Cecil, '21, and J. Peyton, '21.

Eleanor Donnelly, '21, was elected to the Undergraduate Usher Committee in place of E. Bliss, who resigned on account of holding too many points.

A college ring was voted for by the senior class, in a sense of the meeting, thirty-seven to three.

Miss Applebee has been asked to give her opinion on Intercollegiate athletics by the Vassar Debating Club, which will debate on the subject in March.

**IN PHILADELPHIA**

**Academy of Music:** Philadelphia Orchestra, Friday, November 19th, at 3.00, and Saturday, November 20th, at 8.15. Illustrated lecture, by Burton Holmes, on "Constantinople," Friday, the 19th, at 8.15, and Saturday, 20th, at 2.30.

**Broad:** Booth Tarkington's comedy, "Clarence," with Alfred Lunt.

**Forrest:** Last week of "The Sweetheart Shop."

**Garrick:** Mitzi in "Lady Billy."

**Lyric:** "Passing Show of 1919."

**Adelphi:** Mr. Leo Ditrichstein in "The Purple Mask."

**Shubert:** "Irene."

**Stanton (formerly "Stanley"):** Lionel Barrymore in "The Master Mind."

**Arcadia:** "The Right to Love," with Mae Murray and David Powell.

**Academy of Fine Arts:** Fourth annual exhibition of work done at Chester Springs, the summer school of the academy.

**ROBERT CURTHOSE, OF NORMANDY, SUBJECT OF BOOK BY DR. DAVID**

"Robert Curthose, Duke of Normandy," is the subject of a recent book by Dr. Charles Wendell David, Associate Professor of European History, published by the Harvard University Press in October.

"Dr. David has made his own researches and drawn his own conclusions directly from the sources when the evidence permitted, thus providing a volume that will probably rank as the definite life of Robert," says a review of the book. Robert, eldest son of William the Conqueror, was popularly known as the "Sleepy Duke."

"By placing Robert in the setting of his time, the author presents a compact survey of western Europe at the end of the eleventh and beginning of the twelfth centuries. He never loses sight of the larger setting of his subject despite the necessity of weaving an intricate tale.

"For the serious student of history, the volume is provided with copious footnotes that will guide him through the original and the secondary material, with succinct discussions of debated points. There are also seven appendices; a map and a reproduction of Abbot Sugar's window complete the scholarly apparatus of the volume."

Dr. David's book is now in the New Book Room of the Library.

**NEW SYSTEM OF LITERAL GRADES**

(Continued from Page 1)

to be tried for three years, and during this time a committee of the Faculty will continue to study and to improve our examination curves. As we realize that the students during these three years, until they gain confidence in the new system, will be anxious to compare their numerical grades with those of earlier classes graduating under the old system, I am sure that, if desired, the grades of the first ten and the European Fellows for three years will be computed numerically, each literal grade being weighed by the designated number.

**INFORMATION BUREAU STARTED BY NATIONAL RESEARCH COUNCIL**

The National Research Council has established a Research Information Service as a general clearing house and informational bureau for scientific and industrial research. This "service," on request, supplies information concerning research problems, progress, laboratories, equipment, methods, publications, personnel, funds, etc.

Ordinarily inquiries are answered without charge. When this is impossible because of unusual difficulty in securing information, the inquirer is notified and supplied with an estimate of cost.

Requests for information should be addressed, Research Information Service, National Research Council, 1701 Massachusetts Avenue, Washington, D. C.

**NEW REQUISITION BLANKS READY**

New requisition blanks for the use of the Gymnasium, which may be obtained outside the Business Office door, beginning today, relieve the student of all responsibility after she has President Thomas' permission for the lecture, play, entertainment, special meeting or conference, and has made out the slip and left it in the box outside Dean Maddison's office.

**Bryn Mawr Theatre**

Monday, November 22—All star cast in "Held by the Enemy."

Tuesday and Wednesday, November 23 and 24—Thomas Meighan in "The Prince Chap."

Thursday and Friday, November 25 and 26—Cecil B. deMille in "Something to Think About."

Saturday, November 27—Enid Bennett in "Her Husband's Friends."

Vassar Freshmen will again publish the *Sampler*, thereby editing a purely Freshman paper for the fourth year in the college history.

**QUARTERLY PRINTS PICTURE OF NATIONAL ALUMNAE CLUBHOUSE**

The Bryn Mawr Alumnae Quarterly printed in its November issue a picture of the National Clubhouse of the Association of Collegiate Alumnae, in Washington, D. C. The tea room of the clubhouse was furnished by Bryn Mawr. Further information and the special A. C. A. Bulletin on the clubhouse, may be obtained by writing to Mrs. Gertrude S. Martin, 934 Stewart Avenue, Ithaca, N. Y.

**SOMETHING NEW EVERY DAY**

SALESMAN'S

**WAIST AND GARMENT SHOP**

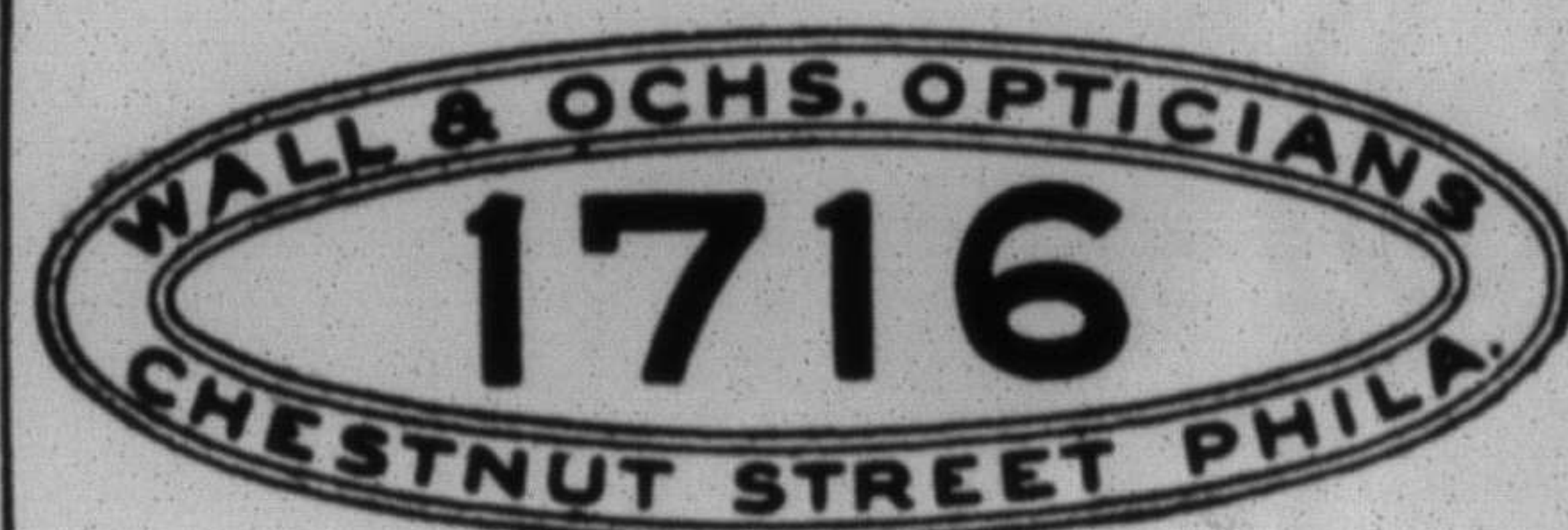
1008 Lancaster Ave., Bryn Mawr, Pa.  
WAISTS, DRESSES, SKIRTS, SILK UNDERWEAR  
Our line of Tailored Waists are Adopted by All Schools and Colleges

**Footer's Dye Works**

AMERICA'S BIGGEST and BEST CLEANERS and DYERS

OFFICE AND PLANT, CUMBERLAND, MD.

PHILADELPHIA BRANCH  
1118 Chestnut Street



Costumes, Wigs, Etc. To Hire  
For Amateur Productions, Masquerade, Church Entertainments, Plays, Minstrels, Tableaux, Etc.  
236 S. 11th St., PHILA.  
Bell Phone, Walnut 18-92

**"COLUMBIA" ATHLETIC APPAREL FOR GIRLS AND WOMEN**

Consumers' League Endorsement  
Gymnasium Suits Sport Skirts  
Camp Costumes Swimming Suits  
Separate Bloomers Athletic Brassiere and Garters  
Middies  
COLUMBIA GYMNASIUM SUIT COMPANY  
Actual Makers 301 Congress St., Boston, Mass.

Bell Phone: Spruce 27-63  
**M. RAPPAPORT**  
**Furrier**  
Fine Furs Remodeling  
Newest Styles Alterations  
211 S. 17TH ST. Just Below Walnut PHILA.

**BAILEY, BANKS & BIDDLE CO.**  
Jewelers Silversmiths Stationers  
PHILADELPHIA  
HONOR ROLL TABLETS  
FRATERNITY EMBLEMS · RINGS  
SEALS · CHARMS · PLAQUES  
MEDALS, ETC.  
of the better kind  
THE GIFT BOOK  
Mailed upon request  
Illustrating and pricing  
GRADUATION AND OTHER GIFTS

**Embick's**  
Coats, Suits, Hats and Dresses  
1618-20 CHESTNUT STREET

**Sessler's Bookshop**  
BOOKS : PICTURES  
1314 Walnut Street, Philadelphia

**MANN & DILKS**  
1102 CHESTNUT STREET

**TYROL WOOL**

A knitted all-worsted fabric—distinguished from the ordinary wool jerseys by our registered trademark. Sold here only.

Ladies' and Misses' Suits  
27.75 34.75 39.75

Top, Street and Motor Coats  
29.75 37.75

Camel's-Hair Polo Coats  
79.75

Plain Tailored Shirts  
FOR  
Ladies and Misses  
Made in our own workrooms of men's custom shirtings

Velour, Beaver and Silk Tailored Hats

MANN & DILKS  
1102 CHESTNUT STREET

### JUNIOR DELEGATE TO REPORT ON SELF-GOVERNMENT CONFERENCE

Katherine Gardner, '22, and Marynia Foote, '21, attended the Intercollegiate Student Government Conference at Elmira, N. Y., last week-end. The Junior delegate will report on the conference at the Self-Government meeting next month.

The honor system, cut system and chap-eron rules were among the most important questions discussed at the conference, at which fifty colleges, situated east of the Mississippi, were represented. The second delegate was chosen to represent the Undergraduate Association because many questions coming under that association here are governed by student government associations in other colleges.

### "IMPORTANCE OF RELIGION IN SERVICE," DR. MUTCH'S TOPIC

Dr. Andrew Mutch, of the Bryn Mawr Presbyterian Church, speaking in chapel last Sunday evening, defended the purely spiritual function of the church which is so often the butt of the criticism of social reformers. "There is great truth," said Doctor Mutch, "in Wesley's saying that 'No man was ever converted in cold feet.' But social reformers often forget that when you have made the world fit to live in you have not necessarily made man fit to live in the world.

"If woman is no longer a mere chattel of brutal men it is because of Jesus Christ," Doctor Mutch declared. "The best friends of the unfortunate have always been the men and women of religious motive, the followers of Jesus Christ.

"Life develops from within," said Doctor Mutch, in conclusion. "It takes a high-souled man to move the masses even into a cleaner stye. Social service always has to go deeper than outward circumstance."

### COMMUNITY CENTER OPENS CAMP

"This past summer, from July 16th to August 16th, the Community Center had its first regular summer camp," says the Center in its first issue. Camp Hilldale was the name of the camp, which was situated on a hill above Brandywine Creek, out near West Chester.

### CALENDAR

#### Friday, November 19th

8.00 P. M.—Sophomore Play in the gymnasium.

#### Saturday, November 20th

10.00 A. M.—Varsity Hockey vs. Haddonfield.

8.00 P. M.—Lecture on Einstein's Theory of Relativity, by Dr. Joseph Ames, in Taylor Hall, under auspices of the Science Club.

#### Sunday, November 21st

6.00 P. M.—Vespers, speaker, Miss Mary Gove Smith, of the I. C. S. A.

7.30 P. M.—Chapel, Sermon by Mr. Sam Higginbottom of the Allahabad Agricultural College.

#### Monday, November 22nd

7.30 P. M.—Lecture on Current Events, by Doctor Fenwick, in Taylor Hall.

#### Wednesday, November 24th

1.00 P. M.—Thanksgiving Holiday begins.

#### Monday, November 29th

9.00 A. M.—Thanksgiving Holiday ends.

#### Wednesday, December 1st

7.30 P. M.—Debate on Russian Soviet Government.

#### Saturday, December 4th

9.00 A. M.—Second French Senior Language Examination, old plan.

10.00 A. M.—Varsity Hockey vs. All-Philadelphia.

8.00 P. M.—Senior Reception to the Freshmen in the gymnasium.

#### Sunday, December 5th

6.00 P. M.—Vespers, speaker, M. Speer, '22.

7.30 P. M.—Chapel, Sermon by Rev. Samuel Shoemaker, General Theological Seminary.

William McDougall, professor of psychology at Harvard, and author of the textbook used in the Major Psychology Class at Bryn Mawr, is leader of a discussion group at Radcliffe College.

### INDIAN PRINCES RECOGNIZE SAM HIGGINBOTTOM'S WORK

Sam Higginbottom, principal of the Allahabad Agricultural Institute, and in charge of the leper colony at Allahabad, India, will lead chapel next Sunday evening. Mr. Higginbottom spoke at Bryn Mawr in 1914, and again last November. He has studied at Princeton and Amherst.

Sent to take charge of the leper colony at Allahabad, Mr. Higginbottom recognized India's need for modern agricultural methods to make her people self-supporting, and founded the school which now has a hundred resident students. The Maharaja of Gwalior recently placed Mr. Higginbottom in charge of the agricultural developments in his province, and sets aside \$25,000 a year for Mr. Higginbottom's use in this work. On the Allahabad farm Brahmans of the highest caste work side by side with the lowest caste men. The crops on Mr. Higginbottom's farm are said to net three or four times as many bushels an acre as those on the adjoining native farms.

### TWO-WEEK CAMPAIGN WILL FOLLOW FINANCE VESPERS

The annual Finance Vespers to explain the organizations on the Christian Association budget, was led by E. Hobdy, '22, in Taylor Hall, last Sunday, and will be followed by a two-week campaign.

Octavia Howard, '22, spoke first on the Federation Secretary of Foyer for foreign students in Geneva, Switzerland.

Bates House, which is entirely supported by Bryn Mawr, and the Bryn Mawr Community Centre, Dean Smith stressed as the two organizations for which the Christian Association is the chief contributor.

Miss Hartshorn, a teacher from Miss Tsuda's school, Japan, illustrated the Christian influence in the school by telling of the change in per cent of Christians entering and leaving it. Of the entering students 15 per cent. are Christians, said Miss Hartshorn, 25 per cent. have heard of Christianity, and the rest are ignorant. When they leave school usually 50 per cent. are Christians, and of the graduates still more. Miss Abby Kirk, principal of Miss Kirk's school and Greek tutor at Bryn Mawr, read a letter from Miss Tsuda's school, appealing for an American teacher.

### PRESTON NEEDS MORE WORKERS

Two students are much needed at the Preston Reading Room, in Haverford, to teach cooking, on Monday afternoons. Several more would also be useful in the play hour with the children, according to E. Bliss, '21, chairman of the Social Service Committee.

### ALUMNAE TO CONFER WITH UNDERGRADUATE COMMITTEE

An informal committee of alumnae, with Eleanor L. Fleisher, '03 (Mrs. David Riesman), as chairman, will hold a conference with the conference committee of the Undergraduate Association on Monday, November 22nd.

The alumnae wish to find out the undergraduate point of view in regard to the present entrance requirements, the orals and the working of the cut rule. The undergraduate conference committee consists of two Seniors, J. Peyton and C. Garrison, and two Juniors, M. Tyler and K. Gardner, and the alumnae committee is unlimited as to number and personnel.

### SCIENCE CLUB ELECTS SUB-OFFICERS

Last Friday the Science Club elections to sub-offices were held. The constitution committee was chosen, consisting of F. Billstein, '21 (chairman); E. Cope, '21, and M. Foote, '21, and H. Farrell, '21, was made chairman of the committee for the reception of speakers. M. Morton, '21, was elected chairman of the Doctors' Club.

### NEW JUNIOR EDITOR ON LANTERN

Ann Gable, '22, has been taken on the Lantern and Welsh Rarebit board as a result of the try-outs. A Sophomore and a Freshman member will be added from further try-outs after Christmas.

### JEANNETT'S

### Bryn Mawr & Wayne Flower Shop

Cut Flowers and Plants Fresh Daily  
Corsage and Floral Baskets

Old Fashioned Bouquets a Specialty

Potted Plants—Personal supervision on all orders

Phone, Bryn Mawr 570

807 Lancaster Ave.

### COMPLIMENTS OF THE

### Bryn Mawr Theatre

Photoplays of Distinction for  
Discriminating People

W. S. HASSINGER, Prop.

PHONE 758

HENRY B. WALLACE

CATERER AND CONFECTIONER  
LUNCHEONS AND TEAS

BRYN MAWR

### BRINTON BROTHERS

FANCY AND STAPLE GROCERIES

Lancaster and Merion Avenues,  
Bryn Mawr, Pa.

Orders Delivered. We aim to please you.

JOHN J. McDEVITT

### PRINTING

1145 Lancaster Ave.

Programs  
Bill Heads  
Tickets  
Letter Heads  
Announcements  
Booklets, etc.

Bryn Mawr, Pa.

### Cards and Gifts

for all occasions

### THE GIFT SHOP

814 Lancaster Ave., Bryn Mawr, Pa.

### DRESSMAKING

Mrs. Harry Lindsay

Warner Ave., Bryn Mawr

GOWNS  
WAISTS

SUITS  
SKIRTS

### Afternoon Tea and Luncheon

COTTAGE TEA ROOM  
Montgomery Ave., Bryn Mawr

Everything dainty and delicious

### D. N. ROSS (Doctor in Pharmacy) BRYN MAWR, PENNA.

Instructor in Pharmacy and Materia Medica, and Director of the Pharmaceutical Laboratory at Bryn Mawr Hospital.

### EASTMAN'S KODAKS AND FILMS

DELICIOUS BANANA  
SUNDAES SPLITS

### The Bryn Mawr Confectionery

848 Lancaster Avenue  
A complete line of Home Made Candies—always fresh  
Delicious Home Made Pies

### John J. Connelly Estate

The Main Line Florists

1226 LANCASTER AVE., Rosemont, Pa.

Telephone, Bryn Mawr 252W

### Young Man's Fancy

at

Whitman's

Soda Counter

### SCHOOLS

### THE HARCUM SCHOOL FOR GIRLS—BRYN MAWR, PA.

For Girls wanting college preparation a thorough course is offered.

For Girls not going to college the school offers special opportunities to pursue studies suited to their tastes and needs.

For Girls desiring to specialize in Music and Art, there are well known artists as instructors.

In Bryn Mawr, the beautiful college town, ten miles from Philadelphia. New stone building sunny rooms with private bath, home life, large grounds, hockey, tennis, basket ball, riding.

Catalogue.

MRS. EDITH HATCHER HARCUM, B.L.  
(Pupil of Leschetizky), Head of the School

Miss M. G. Bartlett, Ph. D. { Associate Heads of the School

Miss S. M. Beach, Ph. D. {

### Whittendale Riding Academy

Telephone 886

Good Saddle Horses, Hunters and Polo Ponies for Hire.

Riding taught by competent instructors.

22 N. Merion Ave., Bryn Mawr

### Hodes

J. M. Gidding & Co.  
Fifth Avenue at 46th Street, N.Y.  
Ritz-Carlton  
Philadelphia

Furs

Hats

### WILLIAM T. McINTYRE

GROCERIES, MEATS AND PROVISIONS

ARDMORE, OVERBROOK, NARBERTH AND BRYN MAWR

BRYN MAWR AVENUE

Phone Connection

### WILLIAM L. HAYDEN

Builders and Housekeeping

HARDWARE

Paints : Oils, : Glass

Cutlery Ground Locksmithing

Lawn Mowers Repaired and Sharpened

838 Lancaster Avenue Bryn Mawr, Pa.

### M. M. GAFFNEY Ladies' and Gents' Furnishings

Dry Goods and Notions

POST OFFICE BLOCK

### E. M. FENNER

Ice Cream, Frozen Fruits and Ices

Fine and Fancy Cakes, Confections

Bryn Mawr (Telephone) Ardmore

Phone, Bryn Mawr 916

Moderate Prices

### Mrs. Hattie W. Moore

Gowns and Blouses

16 Elliott Avenue Bryn Mawr, Pa.

Efficiency Quality Service

### ST. MARY'S LAUNDRY

ARDMORE, PA.

### THE BRYN MAWR TRUST CO.

CAPITAL, \$250,000

DOES A GENERAL BANKING BUSINESS

ALLOWS INTEREST ON DEPOSITS

SAFE DEPOSIT DEPARTMENT

### CARS TO HIRE

Buick and Paig Telephone Accessories and

Agency Bryn Mawr 600 Repair Parts

Electrical and Machine Work our Specialty

MADDEN'S GARAGE

Lancaster Pike, opposite P. R. R. Station. Bryn Mawr